

RESOURCE RECYCLING

April 2011

www.resource-recycling.com



RECYCLE BOTTLES

- ▶ All in the MRF Mix
- ▶ Making Recycling Goals Real
- ▶ The Future of Recycling

P-1 P27

RR 52790 FEB 14
FRANK MONTCALVO PRESIDENT
MONTCALVO DISPOSAL SERVICE
PO BOX 290
KEASBEY NJ 08832-0290
*****3-DIGIT 088

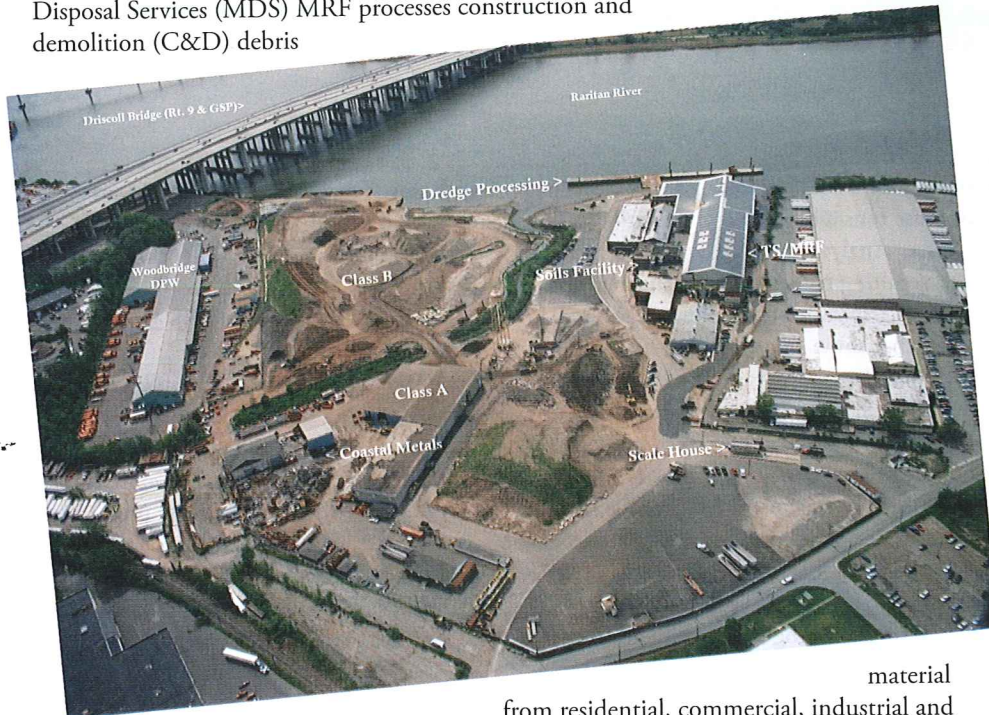


MRF of the Month

Montecalvo Disposal Services, Inc. MRF

Situated on the banks of the Raritan River in Woodbridge Township, New Jersey, sits a recycling facility that screams “convenience,” as it is easily accessible by barge and rail, and is centrally located to all major thoroughfares in the Tri-State Region.

Operated on the same site as Bayshore Recycling Corp, the \$10.7 million Montecalvo Disposal Services (MDS) MRF processes construction and demolition (C&D) debris



material from residential, commercial, industrial and institutional accounts. Some of the end-products are earmarked for use in the heavy highway and road construction applications, which qualify for U.S. Green Building Council Leadership in Energy and Environmental Design (LEED) points, as well. The MDS MRF, which came on-line last April, also processes bulky solid waste, including household furniture, toys, wood scraps, metal, textiles, OCC and other paper products, roofing material, gypsum and much more.

According to Frank Montecalvo, president of MDS, the 100,000-square-foot MRF does not currently accept curbside collected recyclables; however, the company is in the process of constructing another 1,000 tons-per-day plant that will process both dual- and single-stream curbside materials. Montecalvo hopes to have that facility up-and-running later this year.

The MDS facility runs three processing lines that can handle as much as 1,000 tons of bulky, C&D and dry industrial waste per day – over half of the incoming mixed waste stream is wood waste. MDS recycles and markets between 70 and 80 percent of the material it processes, though Montecalvo did state the company has achieved up to 95 percent recovery from some specialized client waste streams. Once fully processed, wood commodities are marketed as landscape mulch and engineered biofuel.

For the nine months the plant operated in 2010, MDS accepted and processed 47,219 tons of material. The company expects to operate at full capacity – in excess of 200,000 tons – for calendar year 2011. The C&D processing installation consists of a mechanized Erin Recycling sorting system by Premier Tech, and MDS also utilizes a Continental Biomass Industries, Inc. grinder to further process wood scraps for the eventual conversion to a biomass fuel.

On a sustainable note, the MRF’s roof is covered with 9,365 solar panels, producing approximately 40 percent of the electricity required to run Bayshore’s contaminated soil processing facility, Bayshore Soil Management, LLC.

Technical Specifications*

Montecalvo Disposal Services, Inc. MRF

Location:

Woodbridge Township, New Jersey

Start-up date:

February 2010 (formal grand opening took place April 2010)

Number of processing lines:

Three

Throughput:

1,000 tons per day permitted

Tons of material processed in 2010:

47,219

Recycling rate:

Between 70 and 80 percent

2007-2008 Materials Processing and Recycling in the United States: Yearbook and Directory

5th Edition — Print or CD-ROM

The 1,300 page Yearbook is the only comprehensive guide to Materials Recovery Facilities (MRFs) in the United States, providing information on 583 operating, planned and shut projects. A nationally recognized resource, it provides a strategic analysis of the post-consumer recycling industry and a database of U.S. Material Recovery Facilities. It is an invaluable reference tool for solid waste decision makers, planners, consultants, and organizations interested in the present and future of recycling.

Governmental Advisory Associates, Inc.

203.226.3238 • 203.226.3239 (fax) • gaa@governmentaladvisory.com • www.governmentaladvisory.com

GAA, Inc.

Altogether, five separate, but complimentary, businesses operate at the company's 52-acre Energy Campus – handling over 10,000 tons of secondary materials each day – making the Bayshore campus one of the largest recyclers in the Northeast. All operations on site currently run eight hours per day, six days per week, though the company is licensed to process material 24 hours per day, year around.

MDS employs approximately 35 sorters for inbound material, and another five who are equipment operators/drivers for processing material on the tipping floor. The support staff consists of one shift supervisor, a compliance manager, and a clerical/office team. Other operations on site employ 60 additional workers, bringing the campus's total employment to roughly 150 full-time workers.



*Know of a North American MRF that you feel *Resource Recycling* readers should know about? If so, email your recommendation, with hi-resolution pictures, to justin@resource-recycling.com, and your facility may just be highlighted in a future "MRF of the Month" column.

MONSOON

DUST/ODOR /SMOKE CONTROL

The ORIGINAL TURBINE Est. 1945

GYRATORY ATOMIZING ANOZZLE

Demolition Sites / Scrap Yards / Landfills / Waste Transfer / Construction Composts / Aggregate Recyclers / Torch Areas /Smoke Control

www.buffaloturbine.com

BUFFALO TURBINE

180 Zoar Valley Road, Springville, NY 14141 / Ph: 716.592.2700

All Buffalo Turbine products are manufactured in the U.S.A. and feature a one year warranty.

Reader service #90

Need Total Destruction?

When you need to destroy confidential information – documents to hard drives – look to Allegheny's superior equipment and cost-effective solutions to get the job done!

You could try using a sledge hammer...but we guarantee you'll get better results with an Allegheny shredder!

AlleghenyShredders

Old William Penn Hwy East • Delmont, PA 15626
800-245-2497 • 724-468-4300
solutions@alleghenyshredders.com
www.alleghenyshredders.com

© Copyright 2010 Allegheny Paper Shredders Corporation

Reader service #11